

**AGREEN** 

FULL CYCLE  
BUILDING MANAGEMENT





FULL CYCLE  
BUILDING MANAGEMENT

AGREEN is an engineering company, dedicated to providing technical support for real estate projects, throughout its life cycle, from the first draft, to the daily maintenance and management.

PROJECT MANAGEMENT - Technical support from the initial Due Diligence to the end of construction.

FACILITIES MANAGEMENT - Building management and technical maintenance services throughout the property's life cycle.

CONSULTANCY - Technical consultancy in all project phases; Energy audit; Sustainability consultancy,.....

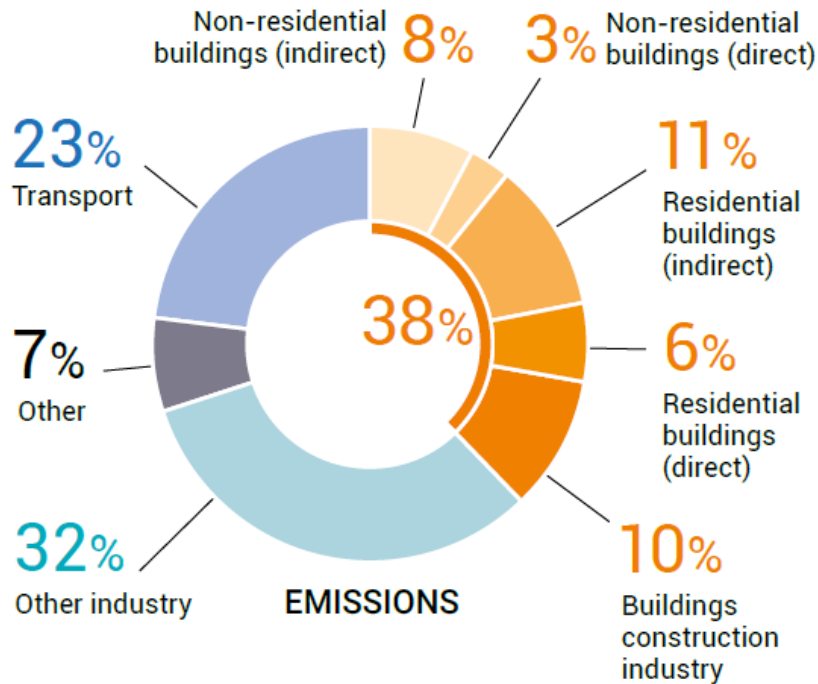
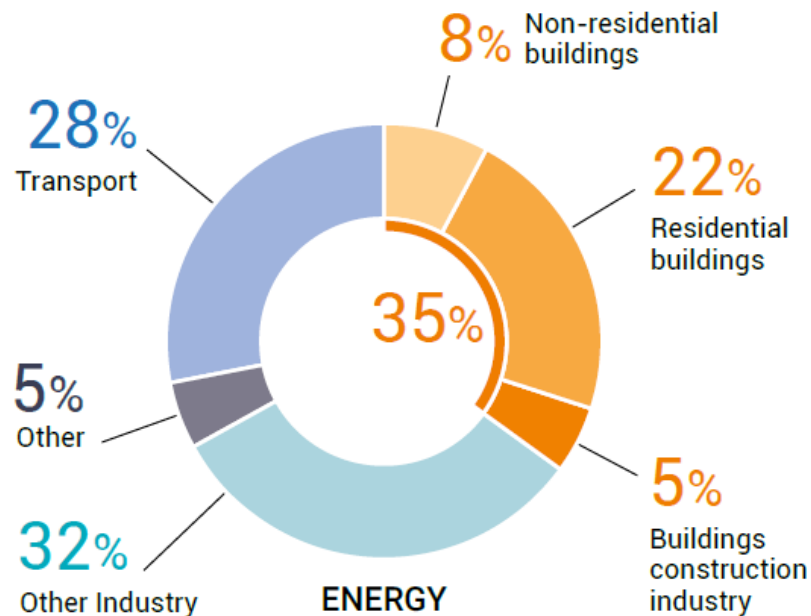


Buildings and all the infrastructure supporting the urban environment, are the main resource used by our society to achieve economic development.





FULL CYCLE  
BUILDING MANAGEMENT





FULL CYCLE  
BUILDING MANAGEMENT

*SUSTAINABLE SOLUTIONS*

1. Eliminate Poverty
2. Erase Hunger
3. Establish Good Health and Well-Being
4. Provide Quality Education
5. Enforce Gender Equality
6. Improve Clean Water and Sanitation
7. Grow Affordable and Clean Energy
8. Create Decent Work and Economic Growth
9. Increase Industry, Innovation, and Infrastructure
10. Reduce Inequality
11. Mobilize Sustainable Cities and Communities
12. Influence Responsible Consumption and Production
13. Organize Climate Action
14. Develop Life Below Water
15. Advance Life On Land
16. Guarantee Peace, Justice, and Strong Institutions
17. Build Partnerships for the Goals

# SUSTAINABLE DEVELOPMENT GOALS



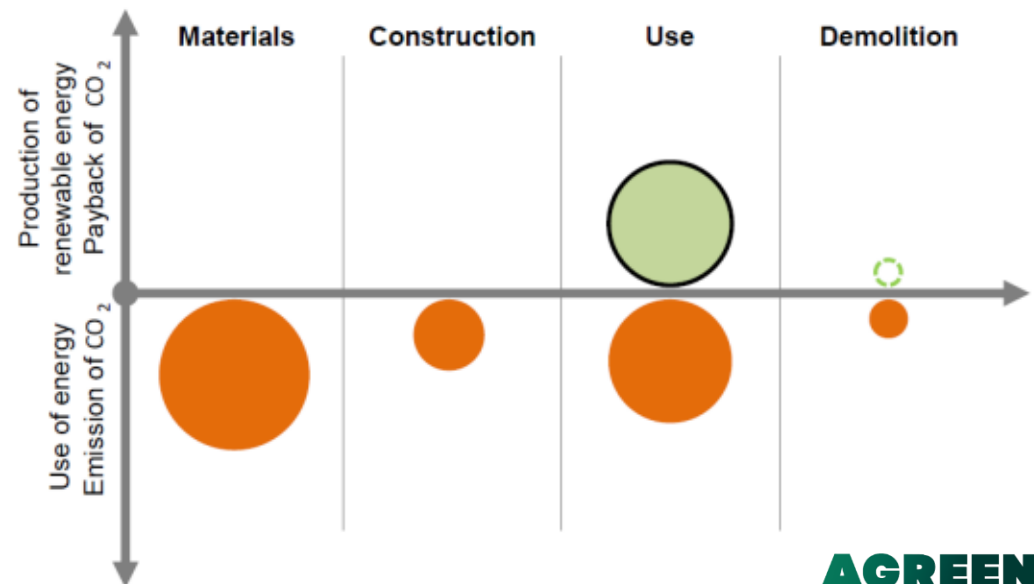


# SUSTAINABLE SOLUTIONS

## Construction Phase - PROJECT MANAGEMENT

### Target: Zero Emissions Buildings

ZEB requirement should apply as of 1 January 2030 to all new buildings, and as of 1 January 2027 to all new buildings occupied or owned by public authorities.





## Principles for Sustainable Construction

1. Minimize resource consumption (Conserve)
2. Maximize resource reuse (Reuse)
3. Use renewable or recyclable resources (Renew/Recycle)
4. Protect the natural environment (Protect Nature)
5. Create a healthy, non-toxic environment (Non-Toxics)
6. Pursue quality in creating the built environment (Quality)

**Charles kibert, 1994**



FULL CYCLE  
BUILDING MANAGEMENT

*SUSTAINABLE SOLUTIONS*

*Construction Phase - PROJECT MANAGEMENT*



## Construction Phase - PROJECT MANAGEMENT

### Technical support in real estate sustainability certifications

#### BREEM

Certification through BRE (Building Research Establishment), for masterplanning projects, infrastructure and buildings.

#### LEED

Certification through the U.S. Green Building Council, all building types.

#### WELL

Certification through the International WELL Building Institute, more focused on health and well-being in buildings.



# SUSTAINABLE SOLUTIONS

## Construction Phase - PROJECT MANAGEMENT

### **SUPERVISION**

#### *Quality*

Supervision of construction works to ensure the correct execution of all construction phases.

### **MANAGEMENT**

#### *Protect Nature*

Properly manage the construction site to reduce waste.

### **ENERGY EFFICIENT EQUIPMENT**

#### *Conserve*

Optimize energy consumption and pollutant emissions during building operation.





# SUSTAINABLE SOLUTIONS

## Construction Phase - PROJECT MANAGEMENT

### **BUILDING REHABILITATION**

#### *Reuse*

Preserving existing structures, salvaging and reusing existing materials.

### **RENEWABLE ENERGY**

#### *Renew/Recycle*

Integration of renewable energy systems

### **NON-TOXIC SOLUTIONS**

#### *Non-toxic Environment*

Prefer materials with recycled content, but mainly, recyclable.

## Construction Phase - PROJECT MANAGEMENT

### GREEN AREAS

*Protect Nature*

Change in landscape project, by removing areas of grass with irrigation replaced by species without irrigation and planting native trees.





FULL CYCLE  
BUILDING MANAGEMENT

*SUSTAINABLE SOLUTIONS*

*Operation Phase - FACILITIES MANAGEMENT*



# SUSTAINABLE SOLUTIONS

## Operation Phase - FACILITIES MANAGEMENT

### Electric Mobility Solutions / Electric Vehicle Chargers

Project, Installation and Maintenance of electric vehicle chargers.



## Operation Phase - FACILITIES MANAGEMENT

### Renewable energy

Project, installation and maintenance of photovoltaics and thermal panels, in existing buildings or under construction.



## Operation Phase - FACILITIES MANAGEMENT

### Energy Efficiency

Energy audits.

Energy consumption management.

Lighting management and control systems.

Replacement of lighting systems for LED's.



Install measuring instruments for energy reduction measures

- Lighting System
- HVAC System





FULL CYCLE  
BUILDING MANAGEMENT

*SUSTAINABLE SOLUTIONS*

*Operation Phase - FACILITIES MANAGEMENT*

## **Rainwater Storage and Reuse Systems**

Water reuse for fire safety systems, garden irrigation and bathrooms.



## *Operation Phase - FACILITIES MANAGEMENT*

### **HVAC System**

Project, installation and maintenance of HVAC Systems

- Equipment optimization
- Climate control in buildings
- HVAC heat pumps

### **TRM Technician**

Responsible for the installation and maintenance of technical systems (TRM)

### **Indoor Air Quality – (QAI)**

Indoor air quality audits  
HVAC system inspection  
Analysis for Legionella disease



*SUSTAINABLE SOLUTIONS*

*CONSULTANCY*

Building Sustainability Consultancy

Technical audits in sustainability

Technical Due Diligence

Building Energy Certification

Building Management System

We work for a better world

[www.agreen.pt](http://www.agreen.pt)

Estrada Consiglieri Pedroso – N° 71  
Edifício D – 6º Esquerdo, Queluz de Baixo  
2730-055 Barcarena  
Tel. +351 218 028 716